

**1986 AFC WILD CARD PLAYOFF GAME** DECEMBER 28, 1986  
**JETS 35, CHIEFS 15**

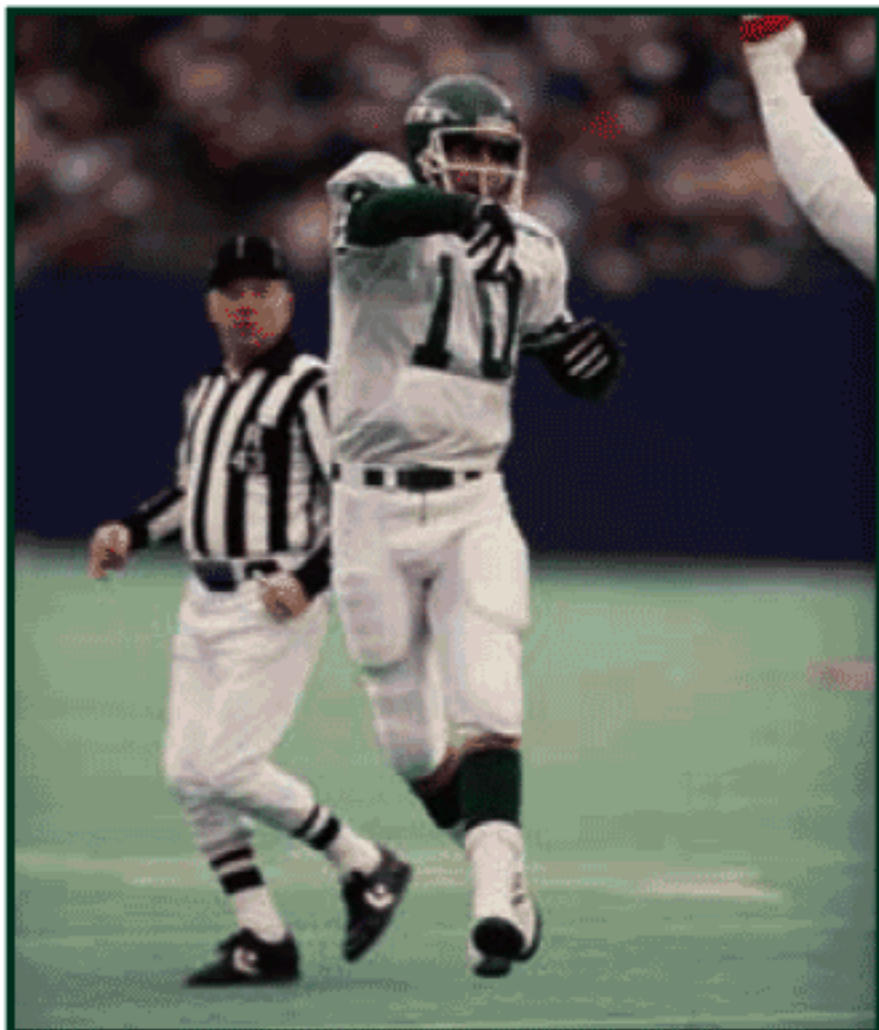
Kansas City Chiefs	6	0	0	9	-	15
New York Jets	7	14	7	7	-	35



at



Joe Walton started Pat Ryan to give the team an emotional lift and they got just that from their QB, who added a key running play and a three-TD passing performance. Freeman McNeil's 135-yard rushing performance also helped spark the Jets' first home playoff win since 1968. Trailing 6-0, Ryan ran a QB draw for 24 yards from the KC 33 on a fourth-and-six play to set up the Jets' go-ahead TD. On the 1st down of the ensuing series, the Jets defense forced a KC fumble and Ryan capped a 12-play, 47-yard drive with a 1-yard pass to McNeil. Just prior to the half, Ryan hit Al Toon with a TD pass for a 21-6 halftime edge. The Jets nailed



Pat Ryan

the victory on the first play of the 2nd half when Kevin McArthur swiped a Todd Blackledge pass and dashed 21 yards for a 28-6 margin. The Jets' defense allowed a season-low 241 yards total offense and had 2 sacks, 2 INT and 1 FR.

**STARTING LINEUPS**

**Jets Offense**

WR	Toon
LT	Sweeney
LG	Bingham
C	Fields
RG	Alexander
RT	King
TE	Shuler
TE	Klever
QB	Ryan
RB	McNeil
FB	Paige

**Chiefs Defense**

LE	Still
NT	Maas
RE	Koch
LOLB	Cooper
LILB	Hackett
RILB	Spani
ROLB	Cofield
CB	Lewis
CB	Ross
S	Burruss
S	Cherry

**Jets Defense**

LE	Lyons
NT	Baldwin
RE	Bennett
LOLB	Crable
LILB	Clifton
RILB	McArthur
ROLB	Guilbeau
CB	Holmes
CB	Carter
S	Lyles
S	Hamilton

**Chiefs Offense**

WR	Marshall
LT	Eatman
LG	Budde
C	Donnalley
RG	Adickas
RT	Lutz
TE	Arnold
WR	Paige
QB	Blackledge
RB	Green
FB	Moriarty

**TEAM STATISTICS**

	Jets	Chiefs
First Downs	19	15
Rushes-Yards	36-165	20-67
Passing Yards	141	174
Pass Att-Comp-INT	23-16-0	37-20-2
Times Sacked-Yards Lost	2-12	2-3
Fumbles-Lost	1-0	2-1
Penalties-Yds. Lost	8-54	1-5
Time of Possession	31:07	28:53

**SCORING**

Team	Play	Score
Chiefs	J. Smith 1 yd. run (kick failed)	6-0
Jets	F. McNeil 1 yd. run (Leahy kick)	6-7
Jets	F. McNeil 1 yd. pass from Ryan (Leahy kick)	6-14
Jets	A. Toon 11 yd. pass from Ryan (Leahy kick)	6-21
Jets	K. McArthur 21 yd. INT return (Leahy kick)	6-28
Chiefs	D. Lewis block PR in end zone (Lowery kick)	13-28
Jets	B. Griggs 6 yd. pass from Ryan (Leahy kick)	13-35
Chiefs	Safety - D. Jennings ran out of end zone	15-35

**PASSING**

Jets	Att	Cmp	Yds	TD-I	Chiefs	Att	Cmp	Yds	TD-I
P. Ryan	23	16	153	3-0	T. Blackledge	21	12	80	0-2
					B. Kenney	16	8	97	0-0
Totals	23	16	153	3-0	Totals	37	20	177	0-2

**RUSHING**

Jets	Att	Yds	TD	Chiefs	Att	Yds	TD
F. McNeil	31	135	1	T. Blackledge	4	33	0
R. Ryan	2	30	0	B. Green	8	15	0
T. Paige	2	3	0	J. Smith	4	12	1
D. Jennings	1	-3	0	L. Moriarity	2	7	0
				H. Heard	1	1	0
				S. Paige	1	-1	0
Totals	36	165	1	Totals	20	67	1

**RECEIVING**

Jets	Rec	Yds	TD	Chiefs	Rec	Yds	TD
A. Toon	4	48	1	H. Marshall	6	72	0
M. Shuler	4	28	0	B. Green	5	7	0
F. McNeil	3	16	1	P. Coffman	3	12	0
Walker	2	45	0	C. Carson	2	43	0
K. Sohn	1	11	0	L. Moriarity	1	16	0
B. Griggs	1	6	1	H. Heard	1	15	0
D. Alexander	1	-1	0				
Totals	16	153	3	Totals	18	165	0

**DEFENSIVE STATISTICS**

**Jets: INT:** R. Carter 1-12, K. McArthur 1-21. **Sacks:** M. Lyons 1-0, M. Gastineau 1-3.

**Chiefs: INT:** None. **Sacks:** D. Hackett 1-5, B. Mars 1-7.

The Meadowlands - Att. - 69,307